

FOR  
LEASE

# 375 International Park

NEWNAN, GA · SHENANDOAH INDUSTRIAL PARK



Built in 1998, this 48,495 SF building features quality tilt up concrete construction in a mature and stable business park with easy access to I-85. Businesses within the park include PetSmart, Apria Healthcare, Inc., Incomm, Mingledorff's Inc., and Yamaha.

AVAILABILITY: IMMEDIATE

ZONING: INDUSTRIAL

CITY: NEWNAN

COUNTY: COWETA

STATE: GEORGIA

BUILDING SQUARE FEET: 48,495 SF

AVAILABLE SQUARE FEET: 18,220 SF

OFFICE SQUARE FEET: 1,600 SF

CONSTRUCTION: TILT UP CONCRETE

YEAR BUILT: 1998

PARKING SPACES: 18

COLUMN SPACING: 50'W X 40'D

CEILING HEIGHT: 24' CLEAR

BUILDING DEPTH: 120'

DOCK HIGH DOORS: 6

DOCK LEVELERS: 0

DRIVE-IN DOORS: 1 (12'X14')

RAIL DOORS: N/A

BUILDING DEPTH: 120'

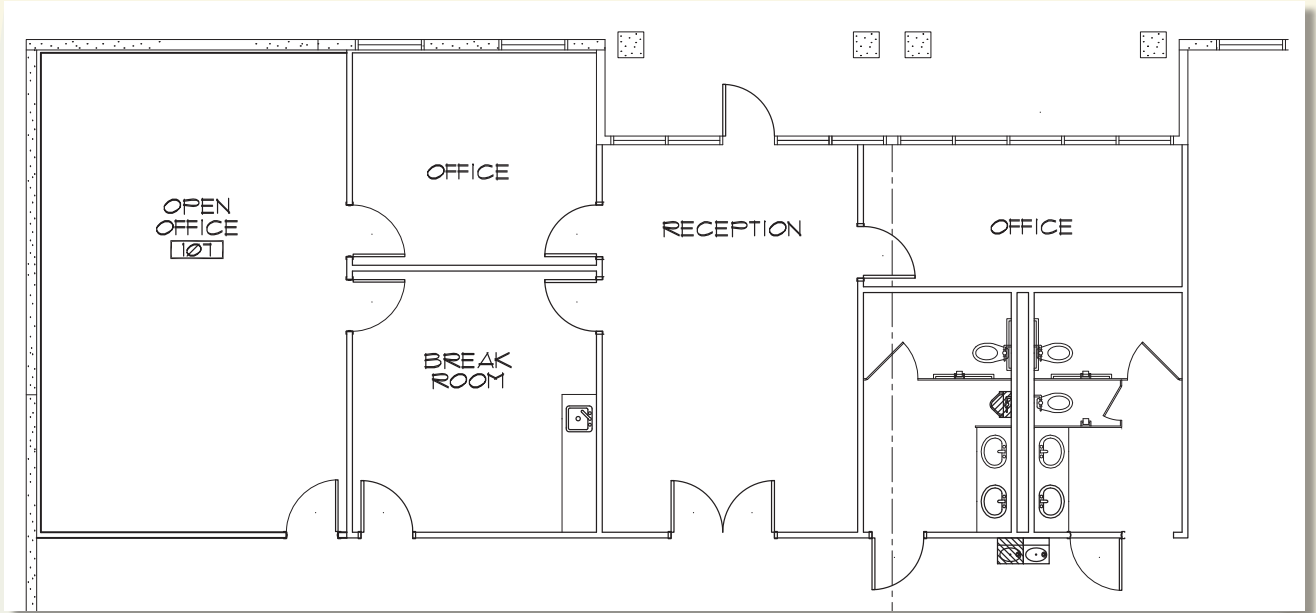
SPRINKLER: CLASS III

POWER: GEORGIA POWER

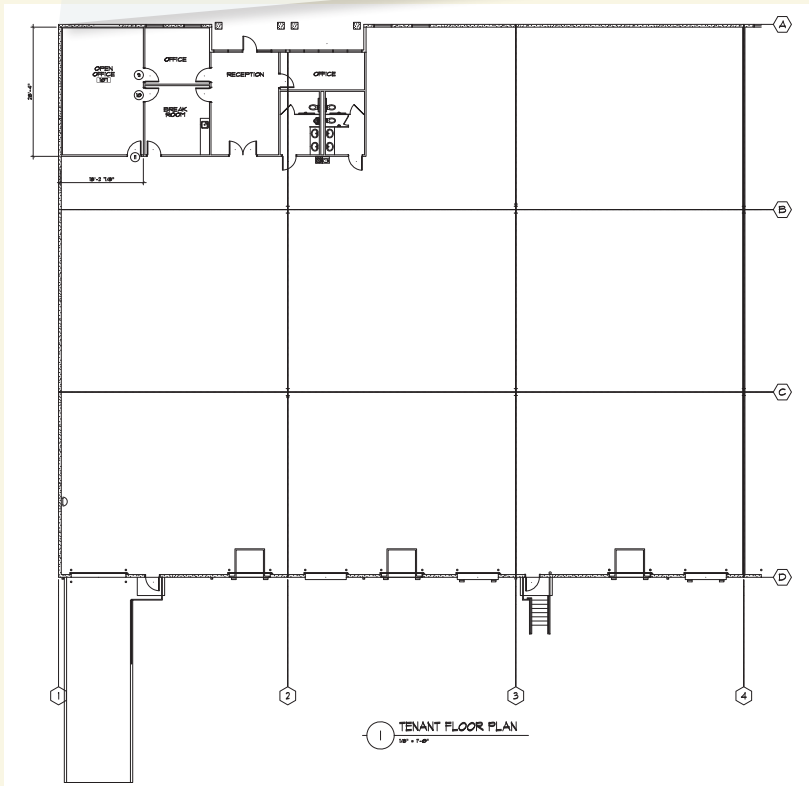
GAS: CUSTOMER CHOICE

SEWER : COWETA COUNTY





OFFICE PLAN



SUITE 400 FLOOR PLAN

**BRIAN CARDOZA**  
briancardoza@rookerco.com  
678.367.4210 ext.3101

**JOHN ROOKER**  
johnrooker@rookerco.com  
678.367.4210 ext.3104