

FOR
LEASE

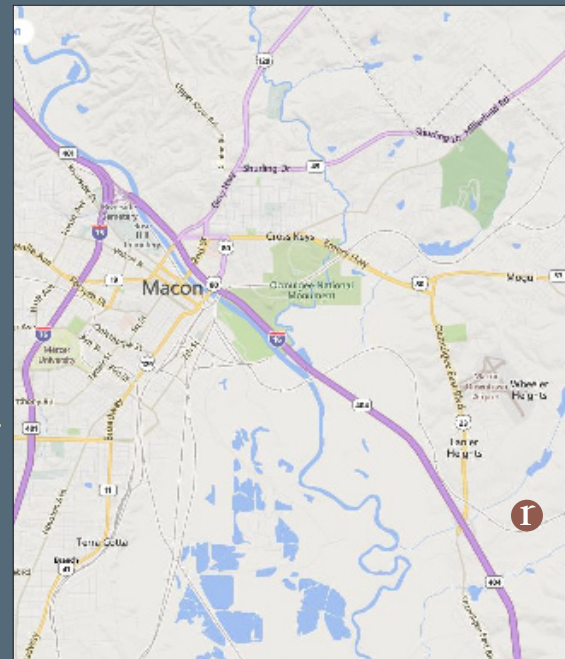
580 Joe Tamplin Blvd.

MACON, GA • OCMULGEE EAST INDUSTRIAL PARK



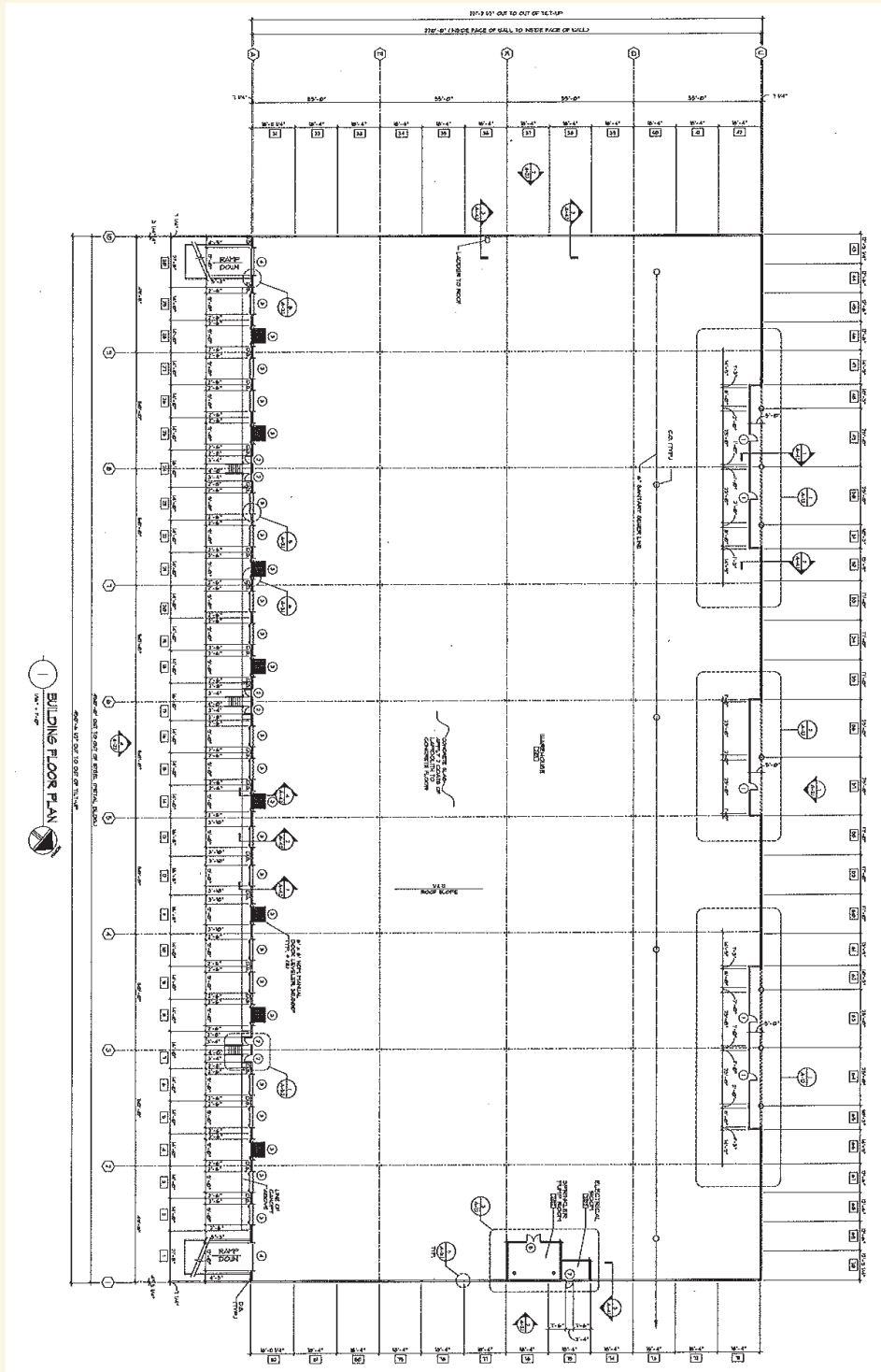
WILSON, HULL & NEAL: BILIJACK R. BELL
o (404) 352-1882 • c (404) 375-0444 • bbell@whnre.com

AVAILABILITY: IMMEDIATE	PARKING SPACES: 80 SPACES
ZONING: INDUSTRIAL	COLUMN SPACING: 50' W X 55' D
CITY: MACON	DOCK HIGH DOORS: (20) 9'x12'
COUNTY: BIBB	DOCK LEVELERS: 5
STATE: GEORGIA	DRIVE-IN DOORS: (1) 12'X14'
BUILDING SQUARE FEET: 99,000	TRUCK COURT DEPTH: 120'
AVAILABLE SQUARE FEET: 77,000	BUILDING DEPTH: 220'
DIVISIBLE TO: 44,000 SF	SPRINKLER: ESR
OFFICE SQUARE FEET: 1,180 SF	LIGHTING: 30 FC T5-H0, EFFICIENT
CONSTRUCTION: TILT UP CONCRETE	POWER: 200 AMP (270/480v)
YEAR BUILT: 2008	OUTSIDE STORAGE: AVAILABLE
CEILING HEIGHT: 28' CLEAR	GUARD HOUSE: AVAILABLE



580 Joe Tamplin Blvd.

MACON, GA



FLOOR PLAN

BRIAN CARDOZA

briancardoza@rookerco.com

678.367.4210 ext.3101

JOHN ROOKER

johnrooker@rookerco.com

678.367.4210 ext.3104

FOR MORE INFO OR TO VISIT THIS PROPERTY, PLEASE CONTACT THE REPRESENTATIVE(S) LISTED ABOVE.

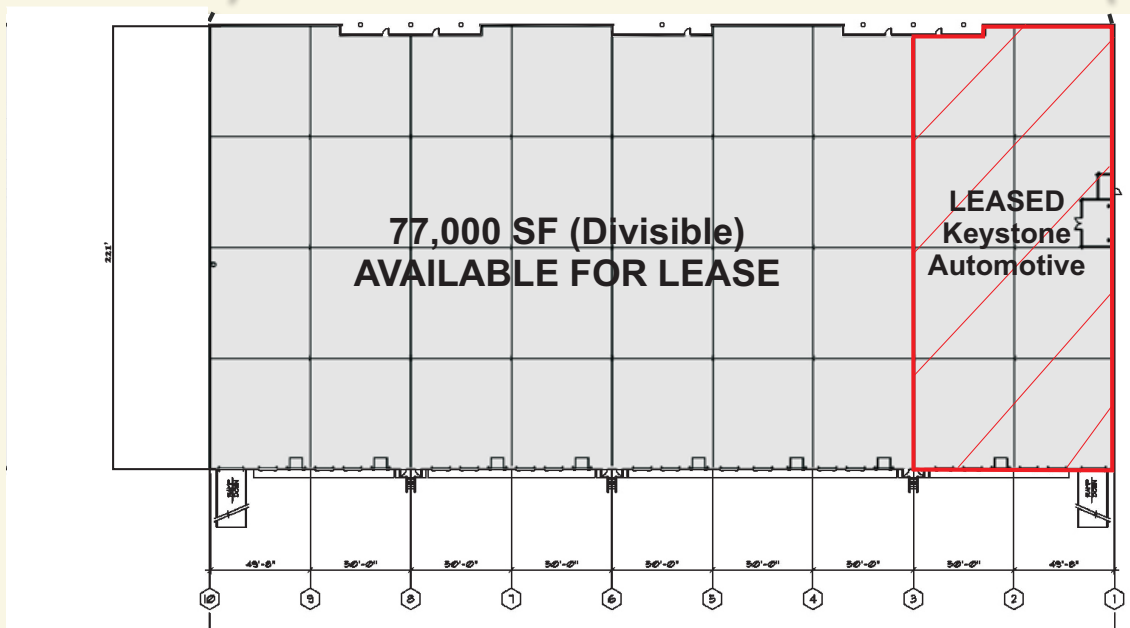
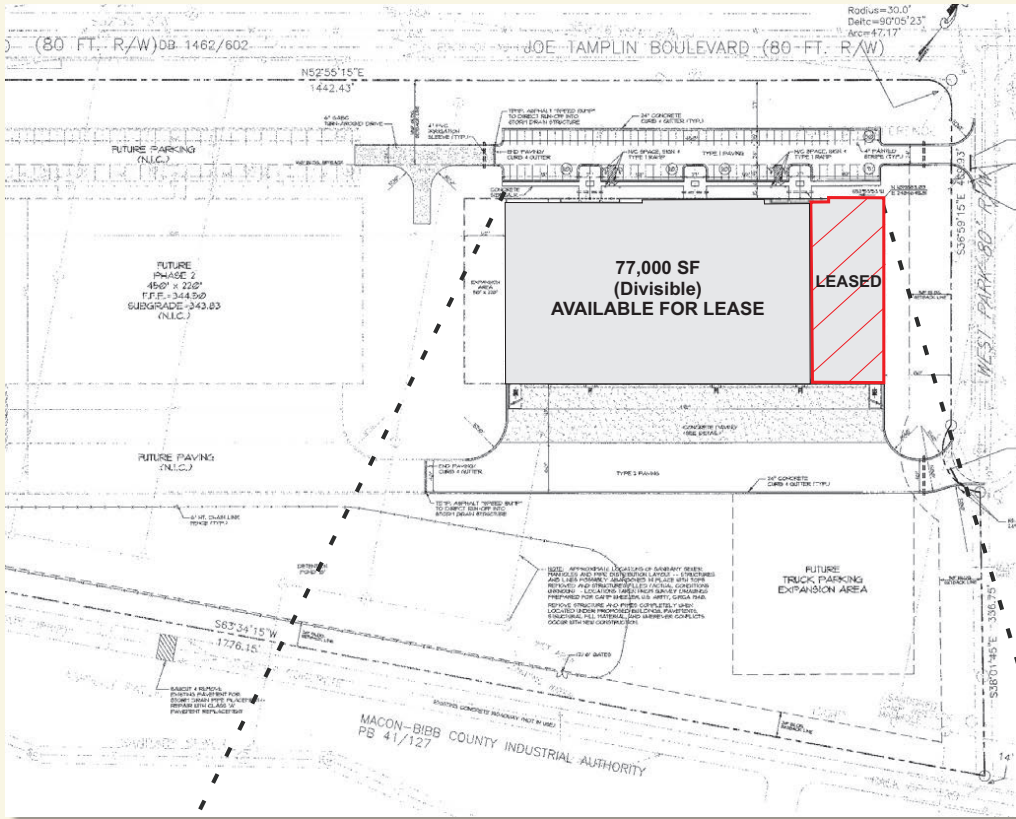
info@rookerco.com

445 Bishop St. NW, Ste. 200, Atlanta, GA 30318

www.rookerco.com

580 Joe Tamplin Blvd.

MACON, GA



FLOOR PLAN

BRIAN CARDOZA
briancardoza@rookerco.com
678.367.4210 ext.3101

JOHN ROOKER
johnrooker@rookerco.com
678.367.4210 ext.3104